



**ATLAS
TIRES**

Since 1935

ATLAS TIRES

TIRE CATALOGUE

PASSENGER CAR TIRE
TRUCK & BUS TIRE

TIRE CATALOGUE



**ATLAS
TIRES**

CONTENTS

PCR TIRE

<u>PASSENGER CAR TIRE</u>	<u>15</u>
<u>SPORT UTILITY VEHICLE TIRE</u>	<u>23</u>
<u>TRAILER TIRE</u>	<u>34</u>

TBR TIRE

<u>LONG HAUL</u>	<u>37</u>
<u>REGIONAL</u>	<u>45</u>
<u>MIXED SERVICE</u>	<u>61</u>

PASSENGER CAR TIRE

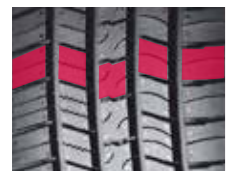
A white passenger car is shown driving on a road, with a red tint and motion blur applied to the image. The car is viewed from a front-quarter perspective, moving towards the right. The background shows a road curving into the distance with a hillside on the right.



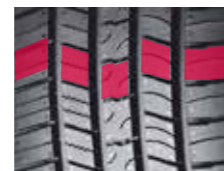
FORCE HP



Mileage Warranty: 50,000Miles



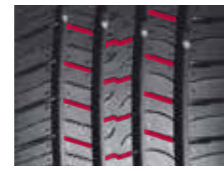
Asymmetric tread pattern design for better drainage performance inside and grip performance outside, excellent steering and handling performance.



Multiple variable pitch design-Multiple variable pitch design to optimize pitch ratio and pitch arrangement, reduce noise and enhance handling performance.



High angle of shoulder groove Improve steering performance.



Strength rib of central pattern block-Increase stiffness of central pattern block, improve braking performance and traction performance.

Three grooves

RIM	Size	Load index	Speed Symbols	Standard Rim	Standard Load	Max Pressure	Overall Diameter	Overall Width	Tread Depth	UTQG
					1bs	psi			32nds	
13	175/70R13 WR	82	H	5.00B	1047	44	22.68	6.97	9.07	700/A/A
	185/60R13 WR	80	H	5 1/2J	992	44	21.73	7.44	9.07	700/A/A
14	175/65R14	82	H	5J	1047	44	22.99	6.97	9.45	700/A/A
	185/60R14	82	H	5 1/2J	1047	44	22.76	7.44	9.83	700/A/A
	185/65R14	86	H	5 1/2J	1168	44	23.46	7.44	9.83	700/A/A
	175/65R15	84	H	5J	1102	44	23.98	6.97	9.70	700/A/A
15	185/55R15	82	V	6J	1047	44	23.03	7.64	9.83	700/A/A
	185/60R15	84	H	5 1/2J	1102	44	23.74	7.44	9.45	700/A/A
	185/65R15	88	H	5 1/2J	1235	44	24.45	7.44	9.83	700/A/A
	195/50R15	82	H	6J	1047	44	22.72	7.91	9.95	700/A/A
	195/55R15	85	V	6J	1135	44	23.43	7.91	9.95	700/A/A
	195/60R15	88	H	6J	1235	44	24.21	7.91	9.95	700/A/A
	195/65R15	91	H	6J	1356	44	25.00	7.91	9.95	700/A/A
16	195/50R16	84	V	6J	1102	44	23.70	7.91	9.95	700/A/A
	195/55R16	87	V	6J	1201	44	24.41	7.91	9.95	700/A/A

Four grooves

RIM	Size	Load index	Speed Symbols	Standard Rim	Standard Load	Max Pressure	Overall Diameter	Overall Width	Tread Depth	UTQG
					1bs	psi			32nds	
15	205/60R15	91	H	6J	1356	44	24.69	8.23	10.08	700/A/A
	205/65R15	94	H	6J	1477	44	25.47	8.23	10.08	700/A/A
	215/60R15	94	H	6 1/2J	1477	44	25.16	8.70	10.20	700/A/A
	235/75R15	105	S	6 1/2J	2039	44	28.86	9.25	10.08	700/A/A
16	205/50R16	87	V	6 1/2J	1201	44	24.09	8.43	10.08	700/A/A
	205/55R16	91	V	6 1/2J	1356	44	24.88	8.43	10.08	700/A/A
	205/60R16	92	V	6J	1389	44	25.67	8.23	10.08	700/A/A
	205/65R16	95	H	6J	1521	44	26.46	8.23	10.08	700/A/A
	215/55R16 XL	97	H	7J	1609	50	25.28	8.90	10.20	700/A/A
	215/60R16	95	V	6 1/2J	1521	44	26.14	8.70	10.20	700/A/A
	215/65R16	98	H	6 1/2J	1653	44	27.01	8.70	10.20	700/A/A
	225/55R16	95	V	7J	1521	44	25.75	9.17	9.95	700/A/A
	225/60R16	98	H	6 1/2J	1653	44	26.61	8.98	10.33	700/A/A
	225/65R16	100	H	6 1/2J	1764	44	27.48	8.98	10.33	700/A/A
	225/70R16 XL	107	H	6 1/2J	2149	50	28.43	8.98	10.08	700/A/A
17	235/60R16	100	H	7J	1764	44	27.09	9.45	10.46	700/A/A
	235/65R16	103	H	7J	1929	44	28.03	9.45	10.08	700/A/A
	205/50R17 XL	93	V	6 1/2J	1433	50	25.12	8.43	10.08	700/A/A
	215/45R17 XL	91	V	7J	1356	50	24.65	8.39	10.20	700/A/A
	215/50R17 XL	95	V	7J	1521	50	25.51	8.90	10.20	700/A/A
	215/55R17	94	V	7J	1477	44	26.30	8.90	10.20	700/A/A
	215/60R17	96	H	6 1/2J	1565	44	27.17	8.70	9.45	700/A/A
	215/65R17	99	H	6 1/2J	1709	44	28.03	8.70	9.45	700/A/A
	225/45R17 XL	94	V	7 1/2J	1477	50	24.96	8.86	10.33	700/A/A
	225/50R17 XL	98	V	7J	1653	50	25.91	9.17	10.33	700/A/A
	225/55R17	97	V	7J	1609	44	26.77	9.17	10.33	700/A/A
	225/60R17	99	H	6 1/2J	1709	44	27.64	8.98	10.33	700/A/A
	225/65R17	102	H	6 1/2J	1874	44	28.50	8.98	10.33	700/A/A
18	235/45R17 XL	97	V	8J	1609	50	25.35	9.29	10.46	700/A/A
	235/55R17	99	V	7 1/2J	1709	44	27.17	9.65	10.46	700/A/A
	235/60R17	102	H	7J	1874	44	28.11	9.45	10.46	700/A/A
	235/65R17	104	H	7J	1984	44	29.06	9.45	10.46	700/A/A
	245/45R17 XL	99	V	8J	1709	50	25.67	9.57	10.58	700/A/A
	245/50R17	99	V	7 1/2J	1709	44	26.69	9.96	10.58	700/A/A
	225/40R18 XL	92	V	8J	1389	50	25.08	9.06	10.33	700/A/A
19	225/45R18 XL	95	V	7 1/2J	1521	50	25.94	8.86	10.33	700/A/A
	225/50R18 XL	99	V	7J	1709	50	26.89	9.17	10.33	700/A/A
	225/55R18	98	V	7J	1653	44	27.76	9.17	10.33	700/A/A
	225/60R18	100	H	6 1/2J	1764	44	28.62	8.98	10.33	700/A/A
	235/40R18 XL	95	V	8 1/2J	1521	50	25.39	9.49	10.46	700/A/A
	235/45R18	94	V	8J	1477	44	26.34	9.29	10.46	700/A/A
	235/50R18	97	V	7 1/2J	1609	44	27.28	9.65	10.46	700/A/A
	235/55R18	100	V	7 1/2J	1764	44	28.15	9.65	10.46	700/A/A
	235/60R18	103	V	7J	1929	44	29.09	9.45	10.46	700/A/A
	245/40R18 XL	97	V	8 1/2J	1609	50	25.71	9.76	10.58	700/A/A
20	245/45R18 XL	100	V	8J	1764	50	26.65	9.57	10.58	700/A/A
	235/55R19	101	V	7 1/2J	1819	44	29.17	9.65	10.46	700/A/A
	245/40R19 XL	98	V	8 1/2J	1653	50	26.73	9.76	10.58	700/A/A
20	255/50R19 XL	107	V	8J	2149	50	29.09	10.43	10.71	700/A/A
	245/45R20	99	V	8J	1709	44	28.66	9.57	10.58	700/A/A
245/50R20	102	V	7 1/2J	1874	44	29.69	9.96	10.58	700/A/A	



FORCE UHP

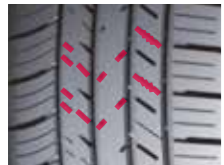


High handling performance UHP tire

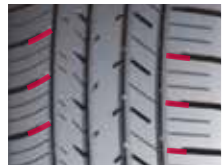
Mileage Warranty: 40,000Miles



Asymmetric tread pattern design for better drainage performance inside and grip performance outside, excellent steering and handling performance.



3D sipes-Increase the stiffness of tread in the process of driving, improve the stability of tire when accelerating, braking and turning, improve steering performance



Strength rib of shoulder-Improve shoulder stiffness, improve handling performance. Reduce shoulder vibration to improve comfort performance and reduce noise.



The cross grooves is full depth of main grooves-Improve tire drainage speed, improve wet performance.



4 longitudinal groove design for wet braking and traction performance.

RIM	Size	Load index	Speed Symbols	Standard Rim	Standard Load	Max Pressure	Overall Diameter	Overall Width	Tread Depth	UTQG
					lbs	psi	in	in	32nds	
16	195/45R16 XL	84	V	6 1/2J	1102	50	22.91	7.68	9.57	520/AA/A
	205/50R16	87	W	6 1/2J	1201	44	24.09	8.43	9.57	520/AA/A
	205/55R16	91	W	6 1/2J	1356	44	24.88	8.43	9.57	520/AA/A
	215/50R16 XL	94	W	7J	1477	50	24.49	8.90	9.57	520/AA/A
	215/55R16 XL	97	W	7J	1609	50	25.28	8.90	9.69	520/AA/A
	225/50R16	92	W	7J	1389	44	24.88	9.17	9.81	520/AA/A
	225/55R16	95	W	7J	1521	44	25.75	9.17	9.81	520/AA/A
	195/40R17 XL	81	V	7J	1019	50	23.15	7.87	9.57	520/AA/A
17	195/45R17 XL	85	W	6 1/2J	1135	50	23.94	7.68	9.57	520/AA/A
	205/40R17 XL	84	W	7 1/2J	1102	50	23.46	8.35	9.34	520/AA/A
	205/45R17 XL	88	W	7J	1235	50	24.25	8.11	9.57	520/AA/A
	205/50R17 XL	93	W	6 1/2J	1433	50	25.12	8.43	9.57	520/AA/A
	215/45R17 XL	91	W	7J	1356	50	24.65	8.39	9.69	520/AA/A
	215/50R17 XL	95	W	7J	1521	50	25.51	8.90	9.69	520/AA/A

RIM	Size	Load index	Speed Symbols	Standard Rim	Standard Load	Max Pressure	Overall Diameter	Overall Width	Tread Depth	UTQG
					lbs	psi	in	in	32nds	
17	215/55R17	94	W	7J	1477	44	26.30	8.90	9.69	520/AA/A
	225/45R17 XL	94	W	7 1/2J	1477	50	24.96	8.86	9.81	520/AA/A
	225/50R17 XL	98	W	7J	1653	50	25.91	9.17	9.81	520/AA/A
	225/55R17	97	W	7J	1609	44	26.77	9.17	9.81	520/AA/A
	235/45R17 XL	97	W	8J	1609	50	25.35	9.29	9.93	520/AA/A
	235/50R17	96	W	7 1/2J	1565	44	26.30	9.65	9.93	520/AA/A
	235/55R17	99	W	7 1/2J	1709	44	27.17	9.65	9.93	520/AA/A
	245/40R17	91	W	8 1/2J	1356	44	24.72	9.76	10.05	520/AA/A
	245/45R17 XL	99	W	8J	1709	50	25.67	9.57	10.05	520/AA/A
	245/65R17 XL	111	H	7J	2403	50	29.53	9.76	10.17	520/AA/A
	255/40R17 XL	98	W	9J	1653	50	25.04	10.24	9.57	520/AA/A
275/40R17	98	W	9 1/2J	1653	44	25.67	10.94	10.41	520/AA/A	
18	195/35R18 XL	79	W	7J	963	50	23.50	7.87	9.57	520/AA/A
	205/35R18 XL	81	W	7 1/2J	1019	50	23.66	8.35	9.57	520/AA/A
	205/40R18 XL	86	W	7 1/2J	1168	50	24.45	8.35	9.57	520/AA/A
	215/35R18 XL	84	W	7 1/2J	1102	50	23.90	8.58	9.34	520/AA/A
	215/40R18 XL	89	Y	7 1/2J	1279	50	24.76	8.58	9.69	520/AA/A
	215/45R18 XL	93	Y	7J	1433	50	25.63	8.39	9.69	520/AA/A
	225/35R18 XL	87	W	8J	1201	50	24.21	9.06	9.57	520/AA/A
	225/40R18 XL	92	Y	8J	1389	50	25.08	9.06	9.81	520/AA/A
	225/45R18 XL	95	Y	7 1/2J	1521	50	25.94	8.86	9.81	520/AA/A
	225/50R18	95	W	7J	1521	44	26.89	9.17	9.81	520/AA/A
	235/40R18 XL	95	Y	8 1/2J	1521	50	25.39	9.49	9.93	520/AA/A
	235/45R18 XL	98	Y	8J	1653	50	26.34	9.29	9.93	520/AA/A
	235/50R18	97	Y	7 1/2J	1609	44	27.28	9.65	9.93	520/AA/A
	245/40R18 XL	97	Y	8 1/2J	1609	50	25.71	9.76	10.05	520/AA/A
	245/45R18 XL	100	Y	8J	1764	50	26.65	9.57	10.05	520/AA/A
	245/50R18	100	Y	7 1/2J	1764	44	27.68	9.96	10.05	520/AA/A
	255/35R18 XL	94	Y	9J	1477	50	25.00	10.24	10.17	520/AA/A
	255/40R18 XL	99	Y	9J	1709	50	26.02	10.24	10.17	520/AA/A
	255/45R18 XL	103	W	8 1/2J	1929	50	27.05	10.04	10.17	520/AA/A
	255/55R18 XL	109	W	8J	2271	50	29.02	10.43	10.17	520/AA/A
19	265/35R18 XL	97	W	9 1/2J	1609	50	25.31	10.67	10.29	520/AA/A
	265/40R18 XL	101	Y	9 1/2J	1819	50	26.34	10.67	10.29	520/AA/A
	275/35R18	95	Y	9 1/2J	1521	44	25.55	10.94	10.41	520/AA/A
	275/40R18 XL	103	Y	9 1/2J	1929	50	26.65	10.94	10.41	520/AA/A
	305/30R18	97	W	11J	1609	44	25.35	12.32	10.17	520/AA/A
	215/35R19 XL	85	V	7 1/2J	1135	50	24.92	8.58	9.57	520/AA/A
	225/35R19 XL	88	W	8J	1235	50	25.24	9.06	9.57	520/AA/A
	225/40R19 XL	93	Y	8J	1433	50	26.10	9.06	9.81	520/AA/A
	225/45R19 XL	96	Y	7 1/2J	1565	50	26.97	8.86	9.81	520/AA/A
235/35R19 XL	91	Y	8 1/2J	1356	50	25.47	9.49	9.57	520/AA/A	
235/40R19 XL	96	Y	8 1/2J	1565	50	26.42	9.49	9.93	520/AA/A	



RIM	Size	Load index	Speed Symbols	Standard Rim	Standard Load	Max Pressure	Overall Diameter	Overall Width	Tread Depth	UTQG
					lbs	psi	in	in	32nds	
19	235/55R19 XL	105	Y	7 1/2J	2039	50	29.17	9.65	9.93	520/AA/A
	245/35R19 XL	93	W	8 1/2J	1433	50	25.79	9.76	9.57	520/AA/A
	245/40R19 XL	98	Y	8 1/2J	1653	50	26.73	9.76	10.05	520/AA/A
	245/45R19 XL	102	W	8J	1874	50	27.68	9.57	10.05	520/AA/A
	245/50R19 XL	105	W	7 1/2J	2039	50	28.70	9.96	10.05	520/AA/A
	245/55R19	103	V	7 1/2J	1929	44	29.65	9.96	10.17	520/AA/A
	255/35R19 XL	96	Y	9J	1565	50	26.02	10.24	10.17	520/AA/A
	255/40R19 XL	100	Y	9J	1764	50	27.05	10.24	10.17	520/AA/A
	255/45R19 XL	104	Y	8 1/2J	1984	50	28.07	10.04	10.17	520/AA/A
	255/50R19 XL	107	Y	8J	2149	50	29.09	10.43	10.17	520/AA/A
	255/60R19	109	H	7 1/2J	2271	44	31.06	10.24	10.17	520/AA/A
	265/30R19 XL	93	W	9 1/2J	1433	50	25.31	10.67	9.57	520/AA/A
	265/35R19 XL	98	Y	9 1/2J	1653	50	26.34	10.67	9.57	520/AA/A
	265/40R19 XL	102	Y	9 1/2J	1874	50	27.36	10.67	10.29	520/AA/A
	265/50R19 XL	110	W	8 1/2J	2337	50	29.49	10.91	10.29	520/AA/A
	275/30R19 XL	96	W	9 1/2J	1565	50	25.55	10.94	10.17	520/AA/A
	275/35R19 XL	100	Y	9 1/2J	1764	50	26.57	10.94	10.41	520/AA/A
	275/40R19 XL	105	Y	9 1/2J	2039	50	27.68	10.94	10.41	520/AA/A
	275/45R19 XL	108	W	9J	2205	50	28.78	10.75	10.17	520/AA/A
	275/55R19	111	W	8 1/2J	2403	44	30.91	11.18	10.17	520/AA/A
20	285/35R19 XL	103	Y	10J	1929	50	26.89	11.42	10.53	520/AA/A
	285/45R19 XL	111	W	9 1/2J	2403	50	29.09	11.22	10.17	520/AA/A
	295/30R19 XL	100	W	10 1/2J	1764	50	26.02	11.85	9.57	520/AA/A
	215/30R20 XL	82	W	7 1/2J	1047	50	25.24	8.58	9.57	520/AA/A
	225/30R20 XL	85	W	8J	1135	50	25.35	9.06	9.81	520/AA/A
	225/35R20 XL	90	W	8J	1323	50	26.22	9.06	9.81	520/AA/A
	235/30R20 XL	88	W	8 1/2J	1235	50	25.59	9.53	9.57	520/AA/A
	235/35R20 XL	92	W	8 1/2J	1389	50	26.46	9.49	9.57	520/AA/A
	245/30R20 XL	90	W	8 1/2J	1323	50	25.83	9.76	9.57	520/AA/A
	245/35R20 XL	95	W	8 1/2J	1521	50	26.77	9.76	10.05	520/AA/A
	245/40R20 XL	99	Y	8 1/2J	1709	50	27.72	9.76	10.05	520/AA/A
	245/45R20 XL	103	Y	8J	1929	50	28.66	9.57	10.05	520/AA/A
	245/50R20	102	V	7 1/2J	1874	44	29.69	9.96	10.17	520/AA/A
	255/30R20 XL	92	W	9J	1389	50	26.06	10.24	9.57	520/AA/A
	255/35R20 XL	97	Y	9J	1609	50	27.01	10.24	10.17	520/AA/A
	255/40R20 XL	101	W	9J	1819	50	28.03	10.24	10.17	520/AA/A
	255/45R20 XL	105	Y	8 1/2J	2039	50	29.06	10.04	10.17	520/AA/A
	255/50R20 XL	109	Y	8J	2271	50	30.08	10.43	10.17	520/AA/A
	265/35R20 XL	99	Y	9 1/2J	1709	50	27.32	10.67	10.29	520/AA/A
	265/45R20 XL	108	Y	9J	2205	50	29.37	10.47	10.29	520/AA/A
265/50R20 XL	111	V	8 1/2J	2403	50	30.47	10.91	10.17	520/AA/A	
275/30R20 XL	97	Y	9 1/2J	1609	50	26.54	10.94	10.41	520/AA/A	
275/35R20 XL	102	Y	9 1/2J	1874	50	27.56	10.94	10.41	520/AA/A	
275/40R20 XL	106	Y	9 1/2J	2094	50	28.66	10.94	10.41	520/AA/A	

RIM	Size	Load index	Speed Symbols	Standard Rim	Standard Load	Max Pressure	Overall Diameter	Overall Width	Tread Depth	UTQG	
					lbs	psi	in	in	32nds		
20	275/45R20 XL	110	W	9J	2337	50	29.76	10.75	10.41	520/AA/A	
	285/25R20 XL	93	W	10 1/2J	1433	50	25.59	11.61	9.57	520/AA/A	
	285/50R20	112	V	9J	2469	44	31.26	11.69	10.17	520/AA/A	
	295/25R20 XL	95	Y	10 1/2J	1521	50	25.83	11.85	9.57	520/AA/A	
	305/25R20 XL	97	Y	11J	1609	50	25.98	12.32	10.17	520/AA/A	
	315/35R20 XL	110	W	11J	2337	50	28.66	12.60	10.17	520/AA/A	
	21	235/35R21	89	W	8 1/2J	1279	44	27.64	9.49	9.57	520/AA/A
245/30R21 XL		91	W	8 1/2J	1356	50	26.81	9.76	9.57	520/AA/A	
245/35R21 XL		96	W	8 1/2J	1565	50	27.76	9.76	9.57	520/AA/A	
255/30R21 XL		93	W	9J	1433	50	27.05	10.24	9.57	520/AA/A	
265/40R21 XL		105	V	9 1/2J	2039	50	29.33	10.67	10.17	520/AA/A	
275/35R21		99	W	9 1/2J	1709	44	28.54	10.94	10.17	520/AA/A	
285/30R21 XL		100	Y	10J	1764	50	27.76	11.42	9.57	520/AA/A	
295/35R21 XL		107	Y	10 1/2J	2149	50	29.09	11.85	10.65	520/AA/A	
22		235/30R22 XL	90	W	8 1/2J	1323	50	27.60	9.53	9.34	520/AA/A
		245/30R22 XL	92	W	8 1/2J	1389	50	27.83	9.76	10.05	520/AA/A
	255/30R22 XL	95	W	9J	1521	50	28.07	10.24	10.17	520/AA/A	
	265/30R22 XL	97	W	9 1/2J	1609	50	28.31	10.67	9.57	520/AA/A	
	265/35R22 XL	102	V	9 1/2J	1874	50	29.33	10.67	9.57	520/AA/A	
	265/40R22 XL	106	V	9 1/2J	2094	50	30.35	10.67	10.17	520/AA/A	
	285/25R22 XL	95	Y	10 1/2J	1521	50	27.60	11.61	9.57	520/AA/A	
	285/35R22 XL	106	W	10J	2094	50	29.88	11.42	10.53	520/AA/A	
	285/40R22 XL	110	V	10J	2337	50	30.98	11.42	10.17	520/AA/A	
	285/45R22 XL	114	V	9 1/2J	2601	50	32.09	11.22	10.17	520/AA/A	
	295/25R22 XL	97	W	10 1/2J	1609	50	27.83	11.85	9.57	520/AA/A	
	295/30R22 XL	103	V	10 1/2J	1929	50	29.02	11.85	9.34	520/AA/A	
	305/25R22 XL	99	Y	11J	1709	50	27.99	12.32	10.17	520/AA/A	
	305/40R22 XL	114	V	11J	2601	50	31.61	12.32	10.17	520/AA/A	
	305/45R22 XL	118	V	10J	2910	50	32.80	11.93	10.17	520/AA/A	
24	245/30R24 XL	94	W	8 1/2J	1477	50	29.84	9.76	9.34	520/AA/A	
	255/30R24 XL	97	W	9J	1609	50	30.08	10.24	10.17	520/AA/A	
	275/25R24 XL	96	W	10J	1565	50	29.45	11.14	10.17	520/AA/A	
	275/30R24 XL	101	W	9 1/2J	1819	50	30.55	10.94	10.17	520/AA/A	
	295/30R24 XL	104	V	10 1/2J	1984	50	31.02	11.85	9.34	520/AA/A	
	295/35R24 XL	110	V	10 1/2J	2337	50	32.13	11.85	10.17	520/AA/A	
	305/35R24 XL	112	V	11J	2469	50	32.44	12.32	10.17	520/AA/A	
26	255/30R26 XL	99	W	9J	1709	50	32.05	10.24	10.17	520/AA/A	
	275/25R26 XL	98	W	10J	1653	50	31.42	11.14	10.17	520/AA/A	
	295/30R26 XL	107	W	10 1/2J	2149	50	32.99	11.85	10.17	520/AA/A	
	305/30R26 XL	109	W	11J	2271	50	33.23	12.32	10.17	520/AA/A	
28	275/25R28 XL	99	W	10J	1709	50	33.54	11.06	10.17	520/AA/A	
	295/25R28 XL	103	V	10 1/2J	1929	50	33.82	11.85	10.17	520/AA/A	
30	275/25R30 XL	101	W	10J	1819	50	35.43	11.14	10.17	520/AA/A	

SPORT UTILITY VEHICLE TIRE



PARALLER 4X4 HP



Balanced Performance Asymmetric Design

Mileage Warranty: 55,000Miles



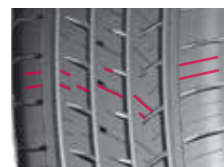
Asymmetric tread pattern design for better drainage performance inside and grip performance outside, excellent steering and perfect handling performance.



4 longitudinal groove design for wet braking and traction performance.



Continuous shoulder design, improve the shoulder stiffness, high speed performance more stability.



Groove and sipe groove improve handling and comfort.

RIM	Size	Load index	Speed Symbols	Standard Rim	Standard Load	Max Pressure	Overall Diameter	Overall Width	Tread Depth	UTQG
					lbs	psi	in	in	32nds	
15	235/70R15 XL	106	H	7J	2094	50	27.99	9.45	10.08	480/A/B
	205/70R16	97	V	6J	1609	44	27.32	8.23	10.08	480/A/B
	215/65R16 XL	102	H	6 1/2J	1874	50	27.01	8.70	10.08	480/A/A
	215/70R16	100	H	6 1/2J	1764	44	27.87	8.70	10.08	480/A/A
	225/75R16	104	H	6J	1984	44	29.29	8.78	10.08	480/A/B
	235/70R16	106	H	7J	2094	44	28.98	9.45	10.08	480/A/B
	245/70R16 XL	111	H	7J	2403	50	29.53	9.76	10.08	480/A/B
	265/70R16	112	H	8J	2469	44	30.63	10.71	10.08	480/A/B
	275/70R16	114	H	8J	2601	44	31.18	10.98	10.08	480/A/B
17	215/60R17	96	H	6 1/2J	1565	44	27.17	8.70	10.08	480/A/A
	225/55R17 XL	101	V	7J	1819	50	26.77	9.17	9.70	480/A/A
	225/60R17	99	H	6 1/2J	1709	44	27.64	8.98	10.08	480/A/A

RIM	Size	Load index	Speed Symbols	Standard Rim	Standard Load	Max Pressure	Overall Diameter	Overall Width	Tread Depth	UTQG
					lbs	psi	in	in	32nds	
17	225/65R17	102	H	6 1/2J	1874	44	28.50	8.98	10.08	480/A/A
	235/55R17 XL	103	W	7 1/2J	1929	50	27.17	9.65	9.70	480/A/A
	235/60R17 XL	106	V	7J	2094	50	28.11	9.45	10.08	480/A/A
	235/65R17 XL	108	V	7J	2205	50	29.06	9.45	10.08	480/A/A
	235/70R17 XL	109	T	7J	2271	50	30.00	9.45	10.08	480/A/B
	245/65R17 XL	111	H	7J	2403	50	29.53	9.76	10.08	480/A/A
	255/60R17	106	H	7 1/2J	2094	44	29.06	10.24	10.08	480/A/A
	255/65R17	110	H	7 1/2J	2337	44	30.08	10.24	10.08	480/A/A
	255/70R17	112	T	7 1/2J	2469	44	31.10	10.24	10.08	480/A/B
265/65R17	112	H	8J	2469	44	30.55	10.71	10.08	480/A/A	
18	225/60R18	100	H	6 1/2J	1764	44	28.62	8.98	10.08	480/A/A
	235/55R18 XL	104	V	7 1/2J	1984	50	28.15	9.65	9.70	480/A/A
	235/60R18 XL	107	V	7J	2149	50	29.09	9.45	10.08	480/A/A
	235/65R18	106	H	7J	2094	44	30.04	9.45	10.08	480/A/A
	245/60R18	105	V	7J	2039	44	29.57	9.76	10.08	480/A/A
	255/55R18 XL	109	V	8J	2271	50	29.02	10.43	9.70	480/A/A
	255/65R18	111	H	7 1/2J	2403	44	31.06	10.24	10.08	480/A/A
	255/70R18	113	T	7 1/2J	2535	44	32.09	10.24	10.08	480/A/B
	265/60R18	110	H	8J	2337	44	30.51	10.71	10.08	480/A/A
265/65R18	114	H	8J	2601	44	31.54	10.71	10.08	480/A/A	
265/70R18	116	T	8J	2756	44	32.64	10.71	10.08	480/A/B	
275/65R18	116	H	8J	2756	44	32.09	10.98	10.08	480/A/A	
19	255/55R19 XL	111	V	8J	2403	50	30.04	10.43	9.70	480/A/A



PARALLER H/T



All-season Performance Long&Regular Wear

Mileage Warranty: 55,000Miles



Cross groove and semi-cross groove design ,improve the wet performance also keep the tread stiffness,ensure the high speed wear performance.



4 longitudinal groove variable groove wall break line design for wet braking and traction performance.



Unique tread fine pattern – Easy to destroy water film, enhance wet performance.

RIM	Size	Ply Rating	Load index	Speed Symbols	Standard Rim	Standard Load	Max Pressure	Overall Diameter	Overall Width	Tread Depth	UTQG
						lbs	psi	in	in	32nds	
16	LT245/75R16	10PR	120/116	R	7J	D 2778 S 3042	80	30.47	9.76	13.23	/
	LT265/75R16	10PR	123/120	R	7 1/2J	D 3085 S 3415	80	31.65	10.51	13.23	/
17	235/65R17	-	104	T	7J	1984	44	29.06	9.45	10.96	600/A/B
	245/65R17	-	107	T	7J	2149	44	29.53	9.76	11.59	600/A/B
	245/70R17	-	110	T	7J	2337	44	30.55	9.76	11.59	600/A/B
	265/65R17	-	112	T	8J	2469	44	30.55	10.71	11.59	600/A/B
	265/70R17	-	115	T	8J	2679	44	31.65	10.71	11.97	600/A/B
	LT265/70R17	10PR	121/118	R	8J	D 2910 S 3195	80	31.65	10.71	13.23	/
20	265/50R20 XL	-	111	V	8 1/2J	2403	50	30.47	10.91	11.34	600/A/B
	275/55R20 XL	-	117	T	8 1/2J	2833	50	31.89	11.18	11.34	600/A/B
	275/60R20	-	115	T	8J	2679	44	32.99	10.98	10.96	600/A/B

RIM	Size	Ply Rating	Load index	Speed Symbols	Standard Rim	Standard Load	Max Pressure	Overall Diameter	Overall Width	Tread Depth	UTQG
						lbs	psi	in	in	32nds	
15	235/75R15 XL	-	109	T	6 1/2J	2271	50	28.86	9.25	10.96	600/A/B
16	215/70R16	-	100	T	6 1/2J	1764	44	27.87	8.70	10.96	600/A/B
	225/70R16	-	103	T	6 1/2J	1929	44	28.43	8.98	10.96	600/A/B
	235/70R16	-	106	T	7J	2094	44	28.98	9.45	10.96	600/A/B
	245/70R16	-	107	T	7J	2149	44	29.53	9.76	11.59	600/A/B
	245/75R16	-	111	T	7J	2403	44	30.47	9.76	11.59	600/A/B
	255/70R16	-	111	T	7 1/2J	2403	44	30.08	10.24	11.59	600/A/B
	265/70R16	-	112	T	8J	2469	44	30.63	10.71	11.59	600/A/B
	265/75R16	-	116	T	7 1/2J	2756	44	31.65	10.51	11.59	600/A/B
	LT215/85R16	10PR	115/112	S	6J	D 2470 S 2680	80	30.39	8.50	13.23	/
	LT225/75R16	10PR	115/112	S	6J	D 2470 S 2680	80	29.29	8.78	13.23	/
16	LT235/65R16	10PR	121/119	R	7J	D 3000 S 3195	80	28.03	9.45	13.23	/
	LT235/85R16	10PR	120/116	R	6 1/2J	D 2835 S 3085	80	31.73	9.25	13.23	/



PARALLER A/T



On & Off Performance Snow / Ice Traction



Mileage Warranty: 55,000 Miles



Shoulder circumferential reinforcement design, tire shoulder decorative pattern design, improve the tire traction in soft ground conditions, improve the cross-country through performance of tire.



Symmetric pattern design, optimization of tire grounding mark shape, balanced force, avoid abnormal wear and tear, improve wear resistance.



Direction of tire rolling reinforcement design, and improve the pattern piece of rigid, is the tyres have stronger control performance.

RIM	Size	Ply Rating	Load index	Speed Symbols	Standard Rim	Standard Load		Max Pressure	Overall Diameter	Overall Width	Tread Depth	UTQG
						1bs	psi					
15	235/75R15 XL OWL	-	109	T	6 1/2J	2271	50	28.86	9.25	11.59	560/A/B	
	265/70R15 OWL	-	112	T	8J	2469	44	29.65	10.71	12.98	560/A/B	
	31X10.50R 15LT OWL	6PR	109	R	8 1/2J	2270	51	30.51	10.55	14.74	/	
	LT235/75R15 OWL	6PR	104/101	R	6 1/2J	D 1820 S 1985	50	28.86	9.25	13.61	/	
16	235/70R16 OWL	-	106	T	7J	2094	44	28.98	9.45	11.59	560/A/B	
	245/70R16 XL OWL	-	111	T	7J	2403	50	29.53	9.76	12.98	560/A/B	
	245/75R16 OWL	-	111	T	7J	2403	44	30.47	9.76	12.98	560/A/B	
	255/70R16 OWL	-	111	S	7 1/2J	2403	44	30.08	10.24	12.98	560/A/B	
	265/70R16 OWL	-	112	T	8J	2469	44	30.63	10.71	12.98	560/A/B	
	265/75R16 OWL	-	116	T	7 1/2J	2756	44	31.65	10.51	12.98	560/A/B	
	LT215/85R16 OWL	10PR	115/112	Q	6J	D 2470 S 2680	80	30.39	8.50	13.61	/	
	LT225/75R16 OWL	10PR	115/112	Q	6J	D 2470 S 2680	80	29.29	8.78	13.61	/	
	LT235/85R16 OWL	10PR	120/116	S	6 1/2J	D 2778 S 3042	80	31.73	9.25	13.61	/	
	LT245/75R16 OWL	10PR	120/116	Q	7J	D 2778 S 3042	80	30.47	9.76	15.12	/	
LT265/75R16 OWL	10PR	123/120	R	7 1/2J	D 3086 S 3417	80	31.65	10.51	14.74	/		

RIM	Size	Ply Rating	Load index	Speed Symbols	Standard Rim	Standard Load		Max Pressure	Overall Diameter	Overall Width	Tread Depth	UTQG
						1bs	psi					
16	LT285/75R16 OWL	10PR	126/123	R	8J	D 3415 S 3750	80	32.83	11.26	15.75	/	
	LT305/70R16 OWL	10PR	124/121	R	9J	D 3195 S 3525	65	32.83	12.24	15.75	/	
17	245/65R17 OWL XL	-	111	T	7J	2403	50	29.53	9.76	12.98	560/A/B	
	245/70R17 OWL	-	110	S	7J	2337	44	30.55	9.76	12.98	560/A/B	
	265/65R17 OWL	-	112	T	8J	2469	44	30.55	10.71	12.98	560/A/B	
	265/70R17 OWL	-	115	T	8J	2679	44	31.65	10.71	13.23	560/A/B	
	285/70R17 OWL	-	116	T	8 1/2J	2756	44	32.76	11.50	12.98	560/A/B	
	LT235/80R17 OWL	10PR	120/117	R	6 1/2J	D 2835 S 3085	80	31.81	9.25	13.61	/	
	LT245/70R17 OWL	10PR	119/116	Q	7J	D 2755 S 3000	80	30.55	9.76	14.74	/	
	LT245/75R17 OWL	10PR	121/118	R	7J	D 2910 S 3195	80	31.50	9.76	14.74	/	
	LT265/70R17 OWL	10PR	121/118	R	8J	D 2910 S 3195	80	31.65	10.71	14.74	/	
	LT285/70R17 OWL	10PR	121/118	S	8 1/2J	D 2910 S 3195	65	32.76	11.50	15.75	/	
LT305/70R17 OWL	8PR	119/116	R	9J	D 2755 S 3000	50	33.86	12.24	15.75	/		
18	255/70R18 OWL	-	113	S	7 1/2J	2535	44	32.09	10.24	12.98	560/A/B	
	265/70R18 OWL	-	116	T	8J	2756	44	32.64	10.71	12.98	560/A/B	
	275/65R18 OWL	-	116	T	8J	2756	44	32.09	10.98	12.98	560/A/B	
	LT265/65R18 OWL	10PR	122/119	Q	8J	D 3000 S 3305	80	31.54	10.71	14.74	/	
	LT265/70R18 OWL	10PR	124/121	S	8J	D 3195 S 3525	80	32.64	10.71	14.74	/	
	LT275/65R18 OWL	10PR	123/120	S	8J	D 3085 S 3415	80	32.09	10.98	14.74	/	
	LT275/70R18 OWL	10PR	125/122	S	8J	D 3305 S 3640	80	33.19	10.98	14.74	/	
LT305/60R18 OWL	10PR	121/118	R	9J	D 2910 S 3195	65	32.40	12.24	15.75	/		
20	275/55R20 OWL	-	113	S	8 1/2J	2535	44	31.89	11.18	10.96	560/A/B	
	275/60R20 OWL	-	115	T	8J	2679	44	32.99	10.98	10.96	560/A/B	
	LT275/55R20 OWL	10PR	120/117	Q	8 1/2J	D 2835 S 3085	80	31.89	11.18	14.74	/	
	LT275/60R20 OWL	10PR	123/120	Q	8J	D 3085 S 3415	80	32.99	10.98	14.74	/	
	LT275/65R20 OWL	10PR	126/123	R	8J	D 3415 S 3750	80	34.09	10.98	14.74	/	
	LT285/55R20 OWL	10PR	122/119	S	9J	D 3000 S 3305	80	32.36	11.69	15.75	/	
	LT305/55R20 OWL	10PR	121/118	R	9 1/2J	D 2910 S 3195	65	33.23	12.44	15.75	/	

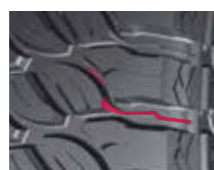
PARALLER M/T



Mud Terrain Muddy ruts for added pulling power



The half - crescent pattern blocks provide a strong gravel traction.



Stiffeners prevent premature wear of gravel and trench bottoms.



The stepped groove wall, zigzag tire shoulder pattern blocks and tire shoulder decoration area provide strong traction on muddy road.



The enhanced tread side decoration and reinforcing bars corresponding to the pattern block protect the tread side from punctures and cuts on non-paved pavement.



RIM	Size	Ply Rating	Load index	Speed Symbols	Standard Rim	Standard Load		Max Pressure	Overall Diameter	Overall Width	Tread Depth	UTQG
						1bs	psi					
15	265/70R15	-	112	Q	8J	2469	44	29.65	10.71	14.74	/	
	265/75R15	-	112	Q	7 1/2J	2469	44	30.67	10.51	14.74	/	
	LT215/75R15	6PR	100/97	Q	6J	D 1610 S 1765	50	27.91	8.50	17.01	/	
	LT235/75R15	6PR	104/101	Q	6 1/2J	D 1820 S 1985	50	29.09	9.25	17.01	/	
	30X9.50R 15LT	6PR	104	Q	7 1/2J	1985	50	29.76	9.45	17.01	/	
	31X10.50R 15LT	6PR	109	Q	8 1/2J	2270	51	30.75	10.55	18.27	/	
	33X12.50R 15LT	6PR	108	Q	10J	2205	44	32.76	12.52	18.27	/	
	35X12.50R 15LT	6PR	113	Q	10J	2535	35	34.76	12.52	18.27	/	
16	205R16LT	8PR	110/108	Q	6J	D 2205 S 2335	65	29.13	8.19	17.01	/	
	LT225/75R16	8PR	110/107	Q	6J	D 2150 S 2335	65	29.53	8.78	17.01	/	
	LT235/85R16 OWL	10PR	120/116	S	6 1/2J	D 2778 S 3042	80	31.97	9.25	17.01	/	
	LT245/75R16	10PR	120/116Q	Q	7J	D 2778 S 3042	80	30.71	9.76	17.01	/	
	LT255/70R16	8PR	115/112	Q	7 1/2J	D 2470 S 2680	65	30.31	10.24	17.89	/	
	LT265/70R16	6PR	110/107	Q	8	D 2150 S 2335	50	30.87	10.71	17.89	/	

RIM	Size	Ply Rating	Load index	Speed Symbols	Standard Rim	Standard Load		Max Pressure	Overall Diameter	Overall Width	Tread Depth	UTQG
						1bs	psi					
16	LT265/75R16	10PR	123/120	Q	7 1/2J	D 3085 S 3415	80	31.89	10.51	18.27	/	
	LT285/75R16	10PR	126/123	Q	8J	D 3415 S 3750	80	33.07	11.26	18.27	/	
	LT305/70R16	10PR	124/121	Q	9J	D 3195 S 3525	65	33.07	12.24	17.89	/	
	LT315/75R16	10PR	127/124	Q	8 1/2J	D 3525 S 3860	65	34.80	12.32	17.89	/	
	LT375/65R16	8PR	126/123	Q	11J	D 3415 S 3750	50	35.43	15.04	19.65	/	
17	LT235/80R17	10PR	120/117	Q	6 1/2J	D 2835 S 3085	80	32.05	9.25	17.01	/	
	LT265/65R17	10PR	120/117	Q	8J	D 2835 S 3085	80	30.79	10.71	17.89	/	
	LT265/70R17	10PR	121/118	Q	8J	D 2910 S 3195	80	31.89	10.71	18.27	/	
	LT285/70R17	10PR	121/118	Q	8 1/2J	D 2910 S 3195	80	32.99	11.50	18.27	/	
	LT295/70R17	10PR	121/118	Q	8 1/2J	D 2910 S 3195	80	33.54	11.77	18.27	/	
	LT305/65R17	10PR	121/118	Q	9J	D 2910 S 3195	65	32.83	12.24	17.89	/	
	LT305/70R17	8PR	119/116	Q	9J	D 2755 S 3000	50	34.09	12.24	17.89	/	
	LT315/70R17	10PR	121/118	Q	9 1/2J	D 2910 S 3195	65	34.65	12.72	18.27	/	
	33X12.50R 17LT	10PR	120	Q	10J	3085	65	32.76	12.52	19.78	/	
	35X12.50R 17LT	10PR	121	Q	10J	3195	65	34.76	12.52	18.27	/	
	37X12.50R 17LT	8PR	124	Q	10J	3525	50	36.77	12.52	18.27	/	
	37X13.50R1 7LT	10PR	121	Q	11J	3195	65	36.77	13.58	19.78	/	
	40X13.50R 17LT	8PR	121	Q	11J	3195	50	39.76	13.58	19.78	/	
18	LT275/70R18	10PR	125/122	Q	8J	D 3305 S 3640	80	33.43	10.98	17.89	/	
	LT295/70R18	10PR	129/126	Q	8 1/2J	D 3750 S 4080	80	34.53	11.77	18.27	/	
	LT305/60R18	10PR	121/118	Q	9J	D 2910 S 3195	65	32.64	12.24	18.27	/	
	LT305/70R18	10PR	126/123	Q	9J	D 3415 S 3750	65	35.08	12.24	18.27	/	
	33X12.50R 18LT	10PR	118	Q	10J	2910	65	32.76	12.52	18.27	/	
	33X12.50R 18LT	12PR	122	Q	10J	3305	80	32.76	12.52	18.27	/	
	35X12.50R 18LT	10PR	123	Q	10J	3415	65	34.76	12.52	18.27	/	
	35X12.50R 18LT	12PR	128	Q	10J	3970	80	34.76	12.52	18.27	/	
	37X13.50R 18LT	8PR	124	Q	11J	3525	50	36.77	13.58	19.78	/	
20	LT285/55R20	10PR	122/119	Q	9J	D 3000 S 3305	80	32.60	11.69	18.27	/	
	LT285/65R20	10PR	127/124	Q	8 1/2J	D 3525 S 3860	80	34.80	11.50	17.89	/	
	LT295/60R20	10PR	126/123	Q	8 1/2J	D 3415 S 3750	80	34.17	11.77	18.27	/	
	LT305/55R20	10PR	121/118	Q	9 1/2J	D 2910 S 3195	65	33.46	12.44	18.27	/	



RIM	Size	Ply Rating	Load Index	Speed Symbols	Standard Rim	Standard Load	Max Pressure	Overall Diameter	Overall Width	Tread Depth	UTQG
						lbs	psi	in	in	32nds	
20	33X12.50R20LT	10PR	114	Q	10J	2600	65	32.76	12.52	18.27	/
	33X12.50R20LT	12PR	119	Q	10J	3000	80	32.76	12.52	18.27	/
	35X12.50R20LT	10PR	121	Q	10J	3195	65	34.76	12.52	18.27	/
	35X12.50R20LT	12PR	125	Q	10J	3640	80	34.76	12.52	18.27	/
	36X15.50R20LT	10PR	126	Q	12 1/2J	3750	65	35.75	15.55	19.78	/
	37X13.50R20LT	10PR	127	Q	11J	3860	65	36.77	13.58	19.78	/
	37X13.50R20LT	12PR	128	Q	11J	3970	80	36.77	13.58	19.78	/
	38X15.50R20LT	8PR	125	Q	12 1/2J	3640	50	37.76	15.55	19.78	/
22	40X14.50R20LT	8PR	128	Q	11 1/2J	3970	50	39.76	14.45	19.78	/
	33X12.50R22LT	10PR	109	Q	10J	2270	65	32.76	12.52	18.27	/
	33X12.50R22LT	12PR	114	Q	10J	2600	80	32.76	12.52	18.27	/
	35X12.50R22LT	10PR	117	Q	10J	2835	65	34.76	12.52	18.27	/
	35X12.50R22LT	12PR	121	Q	10J	3195	80	34.76	12.52	18.27	/
	37X13.50R22LT	10PR	123	Q	11J	3415	65	36.77	13.58	19.78	/
24	37X13.50R22LT	12PR	128	Q	11J	3970	80	36.77	13.58	19.78	/
	33X12.50R24LT	10PR	101	Q	11 1/2J	1820	65	32.76	12.60	18.27	/
26	37X13.50R24LT	10PR	120	Q	11J	3085	65	36.77	13.58	19.78	/
	37X13.50R26LT	10PR	114	Q	11J	2600	65	36.77	13.58	19.78	/

TRAILER TIRE



AT R781



Special trailer use only

- ▼ Low fuel consumption.
- ▼ Specially designed for trailer.

RIM	Size	Ply Rating	Load Index	Speed Symbols	Standard Rim	Standard Load		Max Pressure	Overall Diameter	Overall Width	Tread Depth	UTQG
						1bs	psi					
13	ST175/80R13	6PR	91/87	M	5J	D 1200 S 1360	50	24.02	6.97	7.69	/	
14	ST205/75R14	6PR	100/96	M	5 1/2J	D 1570 S 1760	50	26.14	7.99	7.69	/	
	ST205/75R14	8PR	105/101	M	5 1/2J	D 1820 S 2040	65	26.14	7.99	7.69	/	
	ST215/75R14	6PR	102/98	M	6J	D 1650 S 1870	50	26.69	8.50	7.69	/	
15	ST205/75R15	8PR	107/102	M	5 1/2J	D 1870 S 2150	65	27.13	7.99	7.69	/	
	ST205/75R15	6PR	101/97	M	5 1/2J	D 1610 S 1820	50	27.13	7.99	7.69	/	
	ST225/75R15	8PR	113/108	M	6J	D 2200 S 2540	65	28.31	8.78	7.69	/	
16	ST225/75R15	10PR	117/112	M	6J	D 2470 S 2830	80	28.31	8.78	7.69	/	
	ST235/80R16	10PR	123/119	M	6 1/2J	D 3000 S 3420	80	30.79	9.25	7.69	/	
	ST235/80R16	12PR	126/122	M	6 1/2J	D 3305 S 3750	95	30.79	9.25	7.94	/	
	ST235/85R16	10PR	125/121	M	6 1/2J	D 3200 S 3640	80	31.73	9.25	7.69	/	

F835



All steel radial Special Trailer

- ▼ Recommended for Light Truck applications.
- ▼ Variable angled tread pattern reduces stone retention.
- ▼ Tread pattern delivers lateral traction in all weather conditions.

Size	Load Index & Speed	PR	Load Range	Rim	Max load and Max Air (lbs&psi)				Overall Diameter (in)	Section Width(in)	Revolutions per mile	Tread Depth (32nds)
					Dual		Single					
					1bs	psi	lbs	psi				
ST235/85R16	132/127M	14	G	6.50	3860	110	4400	110	31.73	9.25	659	11.2



LONG HAUL



DRV-09



Radial Truck Tire



- ▼ Recommended for on-highway Long Haul and Regional drive applications.
- ▼ Shoulder and center block design provides traction in all conditions.
- ▼ Construction optimized for long service life.

LONG HAUL

Size	Load Index Speed Symbols	PR	Load Range	Rim	Max load and Max Air (lbs&psi)				Overall Diameter (in)	Section Width (in)	Tread Depth (32nds)
					Dual		Single				
					lbs	psi	lbs	psi			
11R22.5	144/142M	14	G	8.25	5840	105	6175	105	41.93	10.98	27.7
11R22.5	146/143M	16	H	8.25	6005	120	6610	120	41.93	10.98	27.7
11R24.5	146/143M	14	G	8.25	6005	105	6610	105	43.94	10.98	27.7
11R24.5	149/146M	16	H	8.25	6610	120	7160	120	43.94	10.98	27.7
285/75R24.5	144/141M	14	G	8.25	5675	110	6175	110	41.81	11.14	27.7
285/75R24.5	147/144M	16	H	8.25	6175	120	6780	120	41.81	11.14	27.7
295/75R22.5	144/141M	14	G	9.00	5675	110	6175	110	40.39	11.73	27.7
295/75R22.5	146/143M	16	H	9.00	6005	120	6610	120	40.39	11.73	27.7

DRV-09e+



Radial Truck Tire "C SmartWay Verified



- ▼ Recommended for on-highway Long Haul and Regional drive applications.
- ▼ Shoulder and center block design provides traction in all conditions.
- ▼ Low rolling resistant to save fuel costs.

LONG HAUL

Size	Load Index Speed Symbols	PR	Load Range	Rim	Max load and Max Air (lbs&psi)				Overall Diameter (in)	Section Width (in)	Tread Depth (32nds)
					Dual		Single				
					lbs	psi	lbs	psi			
295/75R22.5	144/141M	14	G	9.00	5675	110	6175	110	40.39	11.73	27.7
295/75R22.5	146/143M	16	H	9.00	6005	120	6610	120	40.39	11.73	27.7
11R22.5	144/142M	14	G	8.25	5840	105	6175	105	41.93	10.98	22.0
11R22.5	146/143M	16	H	8.25	6005	120	6610	120	41.93	10.98	22.0
11R24.5	146/143M	14	G	8.25	6005	105	6610	105	43.94	10.98	27.7
11R24.5	149/146M	16	H	8.25	6610	120	7160	120	43.94	10.98	27.7
285/75R24.5	144/141M	14	G	8.25	5675	110	6175	110	41.81	11.14	27.7
285/75R24.5	147/144M	16	H	8.25	6175	120	6780	120	41.81	11.14	27.7

Remark : The above technical data are for reference only.



STRD-09



Radial Truck Tire



- ▼ Recommended for Long Haul applications.
- ▼ Decoupling groove in shoulder to control irregular wear.
- ▼ Construction optimized for long tread life.

LONG HAUL

Size	Load Index Speed Symbols	PR	Load Range	Rim	Max load and Max Air (lbs&psi)				Overall Diameter (in)	Section Width (in)	Tread Depth (32nds)
					Dual lbs	psi	Single lbs	psi			
11R22.5	144/142M	14	G	8.25	5840	105	6175	105	41.50	10.98	18.3
11R22.5	146/143M	16	H	8.25	6005	120	6610	120	41.50	10.98	18.3
11R24.5	146/143M	14	G	8.25	6005	105	6610	105	43.46	10.98	18.3
11R24.5	149/146M	16	H	8.25	6610	120	7160	120	43.46	10.98	18.3
285/75R24.5	144/141M	14	G	8.25	5675	110	6175	110	41.34	11.14	18.3
285/75R24.5	147/144M	16	H	8.25	6175	120	6780	120	41.34	11.14	18.3
295/75R22.5	144/141M	14	G	9.00	5675	110	6175	110	39.92	11.73	18.3
295/75R22.5	146/143M	16	H	9.00	6005	120	6610	120	39.92	11.73	18.3

STRD-09e+



Radial Truck Tire "C SmartWay Verified



- ▼ Recommended for Long Haul applications.
- ▼ Decoupling groove in shoulder to control irregular wear.
- ▼ Construction optimized for fuel economy and long tread life.

LONG HAUL

Size	Load Index Speed Symbols	PR	Load Range	Rim	Max load and Max Air (lbs&psi)				Overall Diameter (in)	Section Width (in)	Tread Depth (32nds)
					Dual lbs	psi	Single lbs	psi			
11R22.5	144/142M	14	G	8.25	5840	105	6175	105	41.50	10.98	18.3
11R22.5	146/143M	16	H	8.25	6005	120	6610	120	41.50	10.98	18.3
11R24.5	146/143M	14	G	8.25	6005	105	6610	105	43.46	10.98	18.3
11R24.5	149/146M	16	H	8.25	6610	120	7160	120	43.46	10.98	18.3
285/75R24.5	144/141M	14	G	8.25	5675	110	6175	110	41.34	11.14	18.3
285/75R24.5	147/144M	16	H	8.25	6175	120	6780	120	41.34	11.14	18.3
295/75R22.5	144/141M	14	G	9.00	5675	110	6175	110	39.92	11.73	18.3
295/75R22.5	146/143M	16	H	9.00	6005	120	6610	120	39.92	11.73	18.3

Remark : The above technical data are for reference only.



STRD-09e+_{II}



Radial Truck Tire "C SmartWay Verified



- ▼ Recommended for on-highway trailer applications.
- ▼ Decoupling groove in shoulder to control irregular wear.
- ▼ Wide footprint for long mileage.
- ▼ Low rolling resistant to save fuel costs.

LONG HAUL

Size	Load Index Speed Symbols	PR	Load Range	Rim	Max load and Max Air (lbs&psi)				Overall Diameter (in)	Section Width (in)	Tread Depth (32nds)
					Dual lbs	psi	Single lbs	psi			
11R22.5	144/142M	14	G	8.25	5840	105	6175	105	41.50	10.98	12.0
11R22.5	146/143M	16	H	8.25	6005	120	6610	120	41.50	10.98	12.0
11R24.5	146/143M	14	G	8.25	6005	105	6610	105	43.46	10.98	12.0
11R24.5	149/146M	16	H	8.25	6610	120	7160	120	43.46	10.98	12.0
285/75R24.5	144/141M	14	G	8.25	5675	110	6175	110	41.34	11.14	12.0
285/75R24.5	147/144M	16	H	8.25	6175	120	6780	120	41.34	11.14	12.0
295/75R22.5	144/141M	14	G	9.00	5675	110	6175	110	39.92	11.73	12.6
295/75R22.5	146/143M	16	H	9.00	6005	120	6610	120	39.92	11.73	12.6

DRV-29e+



Radial Truck Tire



- ▼ Closed shoulder design helps promote uniform wear throughout the life of the tire.
- ▼ Aggressive center lugs help to improve traction in wet or dry conditions for the life of the tread.
- ▼ Optimized the footprint for long and even wear.
- ▼ Strong carcass materials help promote tire durability and provide tire retreadability.

LONG HAUL

Size	Load Index Speed Symbols	PR	Load Range	Rim	Max load and Max Air (lbs&psi)				Overall Diameter (in)	Section Width (in)	Tread Depth (32nds)
					Dual lbs	psi	Single lbs	psi			
11R22.5	144/142L	14	G	8.25	5840	105	6175	105	41.99	10.98	30
11R22.5	146/143L	16	H	8.25	6005	120	6610	120	41.99	10.98	30
11R24.5	146/143L	14	G	8.25	6005	105	6610	105	43.99	10.98	30
11R24.5	149/146L	16	H	8.25	6610	120	7160	120	43.99	10.98	30
285/75R24.5	144/141M	14	G	8.25	5675	110	6175	110	42.03	11.14	30
285/75R24.5	147/144L	16	H	8.25	6175	120	6780	120	42.03	11.14	30
295/75R22.5	144/141L	14	G	9.00	5675	110	6175	110	40.50	11.73	30
295/75R22.5	146/143L	16	H	9.00	6005	120	6610	120	40.50	11.73	30

Remark : The above technical data are for reference only.



REGIONAL



STR-29e+



Radial Truck Tire



- ▼ Wide shoulder ribs reduce shoulder step wear;
- ▼ Each size is manufactured with a specially tread depth to meet a greater range of application;
- ▼ Optimized the footprint for long and even wear;
- ▼ Strong carcass materials help promote tire durability and provide tire retreadability.

REGIONAL

Size	Load Index Speed Symbols	PR	Load Range	Rim	Max load and Max Air (lbs&psi)				Overall Diameter (in)	Section Width (in)	Tread Depth (32nds)
					Dual lbs	psi	Single lbs	psi			
11R22.5	144/142L	14	G	8.25	5840	105	6175	105	41.56	10.98	23.0
11R22.5	146/143L	16	H	8.25	6005	120	6610	120	41.56	10.98	23.0
11R24.5	146/143M	14	G	8.25	6005	105	6610	105	43.56	10.98	23.0
11R24.5	149/146L	16	H	8.25	6610	120	7160	120	43.56	10.98	23.0
255/70R22.5	138/134M	14	G	7.50	4675	110	5205	110	36.64	10.04	18.0
255/70R22.5	140/137L	16	H	7.50	5070	120	5510	120	36.64	10.04	18.0
285/75R24.5	144/141M	14	G	8.25	5675	110	6175	110	41.60	11.14	23.0
285/75R24.5	147/144L	16	H	8.25	6175	120	6780	120	41.60	11.14	23.0
295/75R22.5	144/141L	14	G	9.00	5675	110	6175	110	40.06	11.73	23.0
295/75R22.5	146/143L	16	H	9.00	6005	120	6610	120	40.06	11.73	23.0

AW-09



Radial Truck Tire



- ▼ Recommended for Regional and Pick Up/Delivery applications.
- ▼ Construction optimized for long service life.

REGIONAL

Size	Load Index Speed Symbols	PR	Load Range	Rim	Max load and Max Air (lbs&psi)				Overall Diameter (in)	Section Width (in)	Tread Depth (32nds)
					Dual lbs	psi	Single lbs	psi			
205/75R17.5	124/122M	14	G	6.00	3305	109	3525	109	29.65	8.07	15.7
215/75R17.5*	135/133J	16	H	6.00	4540	123	4805	123	30.20	8.35	15.7
235/75R17.5*	143/141J	18	J	6.75	5675	127	6005	127	31.38	9.17	16.4
225/70R19.5	125/123M	12	F	6.75	3415	95	3640	95	31.93	8.90	15.7
225/70R19.5	128/126M	14	G	6.75	3750	110	3970	110	31.93	8.90	15.7
245/70R19.5	133/131M	14	G	7.50	4300	110	4540	110	33.03	9.76	16.4
245/70R19.5	135/133M	16	H	7.50	4540	120	4805	120	33.03	9.76	16.4
265/70R19.5	140/138M	16	H	7.50	5205	112	5510	112	34.13	10.31	17.0
285/70R19.5	150/148J	18	J	8.25	6940	130	7390	130	35.24	11.14	17.6
255/70R22.5	140/137M	16	H	7.50	5070	120	5510	120	36.61	10.04	17.6
275/70R22.5	148/145M	16	H	8.25	6395	130	6945	130	37.72	10.87	18.3

*Recommended for low platform trailer application

Remark : The above technical data are for reference only.



AP-100



Radial Truck Tire



- ▼ Recommended for Regional all position applications.
- ▼ Construction optimized for long service life.

REGIONAL

Size	Load Index Speed Symbols	PR	Load Range	Rim	Max load and Max Air (lbs&psi)				Overall Diameter (in)	Section Width (in)	Tread Depth (32nds)
					Dual lbs	psi	Single lbs	psi			
11R22.5	144/142M	14	G	8.25	5840	105	6175	105	41.50	10.98	18.3
11R22.5	146/143M	16	H	8.25	6005	120	6610	120	41.50	10.98	18.3
11R24.5	146/143M	14	G	8.25	6005	105	6610	105	43.46	10.98	18.3
11R24.5	149/146M	16	H	8.25	6610	120	7160	120	43.46	10.98	18.3
285/75R24.5	144/141M	14	G	8.25	5675	110	6175	110	41.34	11.14	18.3
285/75R24.5	147/144M	16	H	8.25	6175	120	6780	120	41.34	11.14	18.3
295/75R22.5	144/141M	14	G	9.00	5675	110	6175	110	39.92	11.73	18.3
295/75R22.5	146/143M	16	H	9.00	6005	120	6610	120	39.92	11.73	18.3

AP-100e+



Radial Truck Tire " SmartWay Verified



- ▼ Recommended for Regional all position applications.
- ▼ Optimized for low rolling resistant to save fuel costs.

REGIONAL

Size	Load Index Speed Symbols	PR	Load Range	Rim	Max load and Max Air (lbs&psi)				Overall Diameter (in)	Section Width (in)	Tread Depth (32nds)
					Dual lbs	psi	Single lbs	psi			
11R22.5	144/142M	14	G	8.25	5840	105	6175	105	41.50	10.98	18.3
11R22.5	146/143M	16	H	8.25	6005	120	6610	120	41.50	10.98	18.3
11R24.5	146/143M	14	G	8.25	6005	105	6610	105	43.46	10.98	18.3
11R24.5	149/146M	16	H	8.25	6610	120	7160	120	43.46	10.98	18.3
285/75R24.5	144/141M	14	G	8.25	5675	110	6175	110	41.34	11.14	18.3
285/75R24.5	147/144M	16	H	8.25	6175	120	6780	120	41.34	11.14	18.3
295/75R22.5	144/141M	14	G	9.00	5675	110	6175	110	39.92	11.73	18.3
295/75R22.5	146/143M	16	H	9.00	6005	120	6610	120	39.92	11.73	18.3

Remark : The above technical data are for reference only.



AP-100_x



Radial Truck Tire



- ▼ Recommended for low platform trailer applications.
- ▼ Construction optimized for long service life.

REGIONAL

Size	Load Index Speed Symbols	PR	Load Range	Rim	Max load and Max Air (lbs&psi)				Overall Diameter (in)	Section Width (in)	Tread Depth (32nds)
					Dual lbs	psi	Single lbs	psi			
215/75R17.5	135/133J	16	H	6.00	4540	123	4805	123	30.2	8.31	18.3
235/75R17.5	143/141J	18	J	6.75	5675	127	6005	127	31.38	9.17	18.3
245/70R17.5	143/141J	18	J	7.50	5675	127	6005	127	31.06	9.76	18.3

AP-100_{II}



Radial Truck Tire



- ▼ Designed for on-highway heavy load applications.
- ▼ Wide footprint for even weight distribution.

REGIONAL

Size	Load Index Speed Symbols	PR	Load Range	Rim	Max load and Max Air (lbs&psi)				Overall Diameter (in)	Section Width (in)	Tread Depth (32nds)
					Dual lbs	psi	Single lbs	psi			
12R22.5	152/149L	18	J	9.00	7160	135	7825	135	42.68	11.81	18.3
295/80R22.5	152/149M	18	J	9.00	7160	130	7830	130	41.10	11.73	18.3
315/80R22.5	154/151M	18	J	9.00	7610	120	8270	120	42.36	12.28	18.3
315/80R22.5	157/154L	20	L	9.00	8270	130	9090	130	42.36	12.28	18.3

Remark : The above technical data are for reference only.



AT08CCe+



Radial Truck Tire



- ▼ Recommended for Regional applications.
- ▼ Variable angled tread pattern reduces stone retention.
- ▼ Tread pattern delivers lateral traction in all weather condtions.

REGIONAL

Size	Load Index Speed Symbols	PR	Load Range	Rim	Max load and Max Air (lbs&psi)				Overall Diameter (in)	Section Width (in)	Tread Depth (32nds)
					Dual lbs	psi	Single lbs	psi			
11R22.5	146/143K	16	H	8.25	6005	120	6610	120	41.50	10.98	18.9
11R24.5	149/146K	16	H	8.25	6610	120	7160	120	43.46	10.98	20.8

DRV-0S



Radial Truck Tire



- ▼ Recommended for on-highway Long Haul and Regional drive applications.
- ▼ Open Shoulder tread pattern delivers traction in all weather conditions.
- ▼ Construction optimized for long service life

REGIONAL

Size	Load Index Speed Symbols	PR	Load Range	Rim	Max load and Max Air (lbs&psi)				Overall Diameter (in)	Section Width (in)	Tread Depth (32nds)
					Dual lbs	psi	Single lbs	psi			
11R22.5	144/142L	14	G	8.25	5840	105	6175	105	41.69	10.98	25.8
11R22.5	146/143L	16	H	8.25	6005	120	6610	120	41.69	10.98	25.8
11R24.5	146/143L	14	G	8.25	6005	105	6610	105	43.70	10.98	25.8
11R24.5	149/146L	16	H	8.25	6610	120	7160	120	43.70	10.98	25.8
285/75R24.5	144/141M	14	G	8.25	5675	110	6175	110	41.57	11.14	25.8
285/75R24.5	147/144M	16	H	8.25	6175	120	6780	120	41.57	11.14	25.8
295/75R22.5	144/141M	14	G	9.00	5675	110	6175	110	40.16	11.73	25.8
295/75R22.5	146/143M	16	H	9.00	6005	120	6610	120	40.16	11.73	25.8

Remark : The above technical data are for reference only.



DRV-OS_{IX}



Radial Truck Tire



- ▼ Recommended for on-highway Regional and Pickup/Delivery drive applications.
- ▼ Pattern provides durability, versatility, and wear.
- ▼ Tread pattern provides traction in all weather conditions.

REGIONAL

Size	Load Index Speed Symbols	PR	Load Range	Rim	Max load and Max Air (lbs&psi)				Overall Diameter (in)	Section Width (in)	Tread Depth (32nds)
					Dual		Single				
					lbs	psi	lbs	psi			
225/70R19.5	128/126M	14	G	6.75	3750	110	3970	110	31.93	8.90	18.3
245/70R19.5	135/133L	16	H	7.50	4540	120	4805	120	33.03	9.76	19.5

DRV-OS_V



Radial Truck Tire



- ▼ Recommended for on-highway Regional and Pickup/Delivery drive applications.
- ▼ Wide circumferential grooves reduce hydroplaning.
- ▼ Open Shoulder tread pattern delivers traction in all weather conditions.

REGIONAL

Size	Load Index Speed Symbols	PR	Load Range	Rim	Max load and Max Air (lbs&psi)				Overall Diameter (in)	Section Width (in)	Tread Depth (32nds)
					Dual		Single				
					lbs	psi	lbs	psi			
215/75R17.5	135/133L	16	H	6.00	4540	123	4805	123	30.2	8.35	18.9
235/75R17.5	143/141J	18	J	6.75	5675	127	6005	127	31.38	9.17	19.5
245/70R17.5	143/141J	18	J	7.50	5675	127	6005	127	31.06	9.76	22.7
225/70R19.5	125/123M	12	F	6.75	3415	95	3640	95	31.93	8.90	18.9
225/70R19.5	128/126M	14	G	6.75	3750	110	3970	110	31.93	8.90	18.9
245/70R19.5	133/131M	14	G	7.50	4300	110	4540	110	33.03	9.76	20.8
245/70R19.5	135/133M	16	H	7.50	4540	120	4805	120	33.03	9.76	20.8
285/70R19.5	150/148J	18	J	8.25	6940	130	7390	130	35.24	11.14	20.2

Remark : The above technical data are for reference only.



TR-09



Radial Truck Tire



- ▼ Recommended for on-highway Long Haul and Regional trailer applications.
- ▼ Rounded shoulder reduces the effects of scrubbing during sharp turns.
- ▼ Construction optimized for long service life.

REGIONAL

Size	Load Index Speed Symbols	PR	Load Range	Rim	Max load and Max Air (lbs&psi)				Overall Diameter (in)	Section Width (in)	Tread Depth (32nds)
					Dual lbs	psi	Single lbs	psi			
11R22.5	144/142M	14	G	8.25	5840	105	6175	105	41.34	10.98	13.5
11R22.5	146/143M	16	H	8.25	6005	120	6610	120	41.34	10.98	13.5
11R24.5	146/143M	14	G	8.25	6005	105	6610	105	43.46	10.98	13.5
11R24.5	149/146M	16	H	8.25	6610	120	7160	120	43.46	10.98	13.5
255/70R22.5	140/137M	16	H	7.50	5070	120	5510	120	36.61	10.04	13.5
285/75R24.5	144/141M	14	G	8.25	5675	110	6175	110	41.34	11.14	13.5
285/75R24.5	147/144M	16	H	8.25	6175	120	6780	120	41.34	11.14	13.5
295/75R22.5	144/141M	14	G	9.00	5675	110	6175	110	39.92	11.73	13.5
295/75R22.5	146/143M	16	H	9.00	6005	120	6610	120	39.92	11.73	13.5

TR-09e+



Radial Truck Tire "C SmartWay Verified



- ▼ Recommended for on-highway Long Haul and Regional trailer applications.
- ▼ Rounded shoulder reduces the effects of scrubbing during sharp turns.
- ▼ Optimized for low rolling resistant to save fuel costs.

REGIONAL

Size	Load Index Speed Symbols	PR	Load Range	Rim	Max load and Max Air (lbs&psi)				Overall Diameter (in)	Section Width (in)	Tread Depth (32nds)
					Dual lbs	psi	Single lbs	psi			
11R22.5	144/142M	14	G	8.25	5840	105	6175	105	41.34	10.98	12.6
11R22.5	146/143M	16	H	8.25	6005	120	6610	120	41.34	10.98	12.6
11R24.5	146/143M	14	G	8.25	6005	105	6610	105	43.46	10.98	13.5
11R24.5	149/146M	16	H	8.25	6610	120	7160	120	43.46	10.98	13.5
295/75R22.5	144/141M	14	G	9.00	5675	110	6175	110	39.92	11.73	12.6
295/75R22.5	146/143M	16	H	9.00	6005	120	6610	120	39.92	11.73	12.6
285/75R24.5	144/141M	14	G	8.25	5675	110	6175	110	41.34	11.14	13.5
285/75R24.5	147/144M	16	H	8.25	6175	120	6780	120	41.34	11.14	13.5

Remark : The above technical data are for reference only.



APW092



Radial Truck Tire



- ▼ Recommended for Regional applications.
- ▼ Zig-zag groove tread design reduces stone retention.

REGIONAL

Size	Load Index Speed Symbols	PR	Load Range	Rim	Max load and Max Air (lbs&psi)				Overall Diameter (in)	Section Width (in)	Tread Depth (32nds)
					Dual lbs	psi	Single lbs	psi			
385/65R22.5	158K	18	J	11.75	/	/	9370	120	42.20	15.31	20.8
385/65R22.5	160J	20	L	11.75	/	/	9920	130	42.20	15.31	20.8

APW093



Radial Truck Tire



- ▼ Recommended for Regional applications.
- ▼ Zig-zag groove tread design reduces stone retention.
- ▼ Tread pattern delivers lateral traction in all weather conditions.

REGIONAL

Size	Load Index Speed Symbols	PR	Load Range	Rim	Max load and Max Air (lbs&psi)				Overall Diameter (in)	Section Width (in)	Tread Depth (32nds)
					Dual lbs	psi	Single lbs	psi			
425/65R22.5	162K	18	J	12.25	/	/	10500	110	44.25	16.61	22.0
425/65R22.5	165J	20	L	12.25	/	/	11400	120	44.25	16.61	22.0

Remark : The above technical data are for reference only.



MIXED SERVICE

AT08CC



Radial Truck Tire



- ▼ Recommended for Mixed Service applications.
- ▼ Variable angled tread pattern reduces stone retention.
- ▼ Tread pattern delivers lateral traction in all weather conditions.

MIXED SERVICE

Size	Load Index Speed Symbols	PR	Load Range	Rim	Max load and Max Air (lbs&psi)				Overall Diameter (in)	Section Width (in)	Tread Depth (32nds)
					Dual lbs	psi	Single lbs	psi			
7.50R16LT	122/118M	14	G	6.00G	2910	112	3305	112	31.69	8.46	15.7
7.50R16LT	120/116M	12	F	6.00G	2755	97	3085	97	31.69	8.46	15.7
8.25R16LT	126/122L	14	G	6.50H	3305	97	3705	97	33.66	9.25	17.0
8.25R16LT	128/124L	16	H	6.50H	3525	112	3970	112	33.66	9.25	17.0
9.00R20	144/142K	16	H	7.0	5840	130	6175	130	40.12	10.20	18.9
10.00R20	146/143K	16	H	7.5	6005	120	6610	120	41.50	10.94	19.5
10.00R20	149/146K	18	J	7.5	6610	135	7160	135	41.50	10.94	19.5
11.00R20	150/147K	16	H	8.0	6780	120	7390	120	42.72	11.54	20.8
11.00R20	152/149K	18	J	8.0	7160	135	7830	135	42.72	11.54	20.8
12.00R20	154/151K	18	J	8.5	7610	120	8270	120	44.29	12.40	20.8
11R22.5	146/143K	16	H	8.25	6005	120	6610	120	41.50	10.98	18.9
11R24.5	149/146K	16	H	8.25	6610	120	7160	120	43.46	10.98	20.8
12R22.5	152/149K	16	H	9.00	7160	135	7825	135	42.72	11.81	21.4
12.00R24	158/155K	18	J	8.5	8540	120	9370	120	48.27	12.32	21.4
12.00R24	160/156K	20	L	8.5	8815	123	9915	123	48.27	12.32	21.4
315/80R22.5	157/154K	20	L	9.00	8270	130	9090	130	42.36	12.28	22.0
255/70R22.5	140/137M	16	H	7.50	5070	120	5510	120	36.61	10.04	16.0

AP-09₁



Radial Truck Tire



- ▼ Recommended for Mixed Service steer applications.
- ▼ Pattern provides durability, versatility, and wear.
- ▼ Provides good traction in a variety of conditions.

MIXED SERVICE

Size	Load Index Speed Symbols	PR	Load Range	Rim	Max load and Max Air (lbs&psi)				Overall Diameter (in)	Section Width (in)	Tread Depth (32nds)
					Dual lbs	psi	Single lbs	psi			
10.00R20	146/143K	16	H	7.5	6005	120	6610	120	41.50	10.94	20.2
10.00R20	149/146K	18	J	7.5	6610	135	7160	135	41.50	10.94	20.2
11R22.5	146/143M	16	H	8.25	6005	120	6610	120	41.73	10.98	23.9

Remark : The above technical data are for reference only.

APW095



Radial Truck Tire



- ▼ Recommended for Mixed Service applications.
- ▼ Optimized for low rolling resistant to save fuel costs.
- ▼ Tread pattern delivers traction in all weather conditions.

MIXED SERVICE

Size	Load Index Speed Symbols	PR	Load Range	Rim	Max load and Max Air (lbs&psi)				Overall Diameter (in)	Section Width (in)	Tread Depth (32nds)
					Dual lbs	psi	Single lbs	psi			
385/65R22.5	160K	20	L	11.75	—	—	9920	130	42.20	15.31	20.8
425/65R22.5	165K	20	L	12.25	—	—	11400	120	44.25	16.61	22.0
445/65R22.5	168K	20	L	13.00	—	—	12300	120	45.28	17.48	22.7

DRV-M_{III}



Radial Truck Tire



- ▼ Recommended for Mixed Service drive applications.
- ▼ Heavy lugs optimized for cut, tear and puncture resistance.
- ▼ Reinforced bead enhances load capability.
- ▼ New tread compaund for resistance cuts, chips and teaing.

MIXED SERVICE

Size	Load Index Speed Symbols	PR	Load Range	Rim	Max load and Max Air (lbs&psi)				Overall Diameter (in)	Section Width (in)	Tread Depth (32nds)
					Dual lbs	psi	Single lbs	psi			
11R22.5	146/143J	16	H	8.25	6005	120	6610	120	41.93	10.98	24.6
275/80R22.5	149/146J	16	H	8.25	6610	123	7160	123	40.08	10.87	24.6
295/80R22.5	150/147F	16	H	9.00	6780	120	7390	120	41.34	11.73	24.6
295/80R22.5	152/148F	16	H	9.00	6945	123	7825	123	41.34	11.73	24.6

Remark : The above technical data are for reference only.

DRV-M_{IV}



Radial Truck Tire

- ▼ Recommended for Mixed Service applications.
- ▼ Variable angled tread pattern reduces stone retention.
- ▼ Reinforced bead enhances load capability.
- ▼ New tread compaund for resistance cuts, chips and teaing.

MIXED SERVICE

Size	Load Index Speed Symbols	PR	Load Range	Rim	Max load and Max Air (lbs&psi)				Overall Diameter (in)	Section Width (in)	Tread Depth (32nds)
					Dual lbs	psi	Single lbs	psi			
295/80R22.5	152/148F	16	H	9.00	6945	123	7825	123	41.34	11.73	27.7
295/80R22.5	152/149F	18	J	9.00	7160	130	7830	130	41.34	11.73	27.7

DRV-950



Radial Truck Tire

- ▼ Recommended for Short Haul Logging drive applications.
- ▼ Designed for durability and long service life.
- ▼ Provides excellent traction in a variety of conditions and surfaces.
- ▼ New tread compaund for resistance cuts, chips and teaing.

MIXED SERVICE

Size	Load Index Speed Symbols	PR	Load Range	Rim	Max load and Max Air (lbs&psi)				Overall Diameter (in)	Section Width (in)	Tread Depth (32nds)
					Dual lbs	psi	Single lbs	psi			
11R22.5	146/143K	16	H	8.25	6005	120	6610	120	41.93	10.98	29.0
11R24.5	149/146G	16	H	8.25	6610	120	7160	120	43.94	10.98	31.4
11R24.5	149/146F	16	H	8.25	6610	120	7160	120	43.94	10.98	31.4

Remark : The above technical data are for reference only.



DRV-960



Radial Truck Tire



- ▼ Recommended for Mixed Service drive applications.
- ▼ Deep and rigid block design provides traction in all conditions.

MIXED SERVICE

Size	Load Index Speed Symbols	PR	Load Range	Rim	Max load and Max Air (lbs&psi)				Overall Diameter (in)	Section Width (in)	Tread Depth (32nds)
					Dual		Single				
					lbs	psi	lbs	psi			
12.00R24	158/155K	18	J	8.5	8540	120	9370	120	48.27	12.32	26.5
12.00R24	160/156K	20	L	8.5	8815	123	9915	123	48.27	12.32	26.5

Remark : The above technical data are for reference only.